



Jack & Wrench

Installation Instruction Sheet

Part Number

0910542040

Applicable Car Models

SOLTERRA

Components

(1)		(5)	
(2)		(6)	
(3)		(7)	
(4)			

No.	Product name	Quantity	Service part number
(1)	Jack	1	0911142070
(2)	Jack handle	1	0911342030
(3)	Wrench	1	0915142010
(4)	Jack carrier	1	5879042050
(5)	Hub bolt socket	1	0915A53010
(6)	Wheel guide pin	1	0915B53010
(7)	Nut (M6)	4	9017906216

Installation precautions

The following symbols are used in this installation instruction sheet to ensure safe operation.

Caution: Indicates information that, if not heeded, could lead to accidents, injury, damage to the vehicle, etc.

Advice: Indicates information to be kept in mind when working quickly.

1. Park the vehicle on a level surface, pull on the parking brake, and ensure that the wheels are securely fastened.
2. When removing vehicle parts, handle with care to prevent damage to the vehicle and the removed parts.
3. Do not remove vehicle parts other than those indicated in this installation instruction sheet.

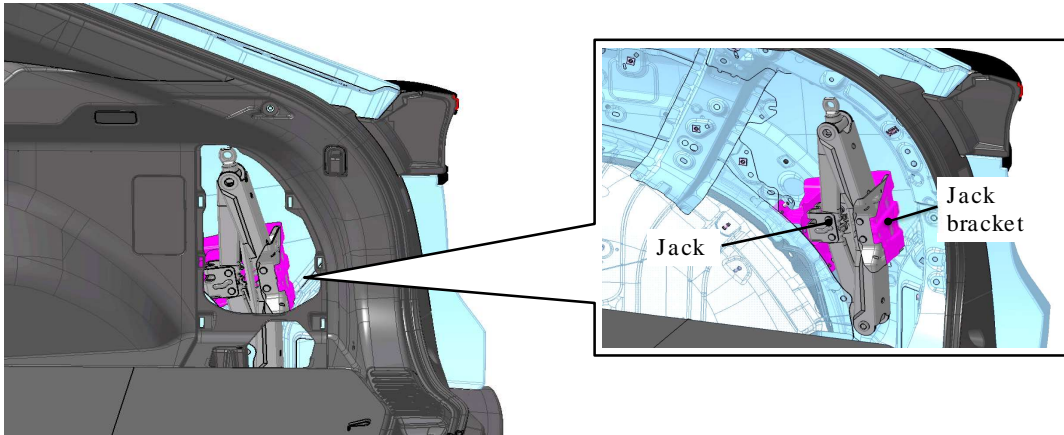
Tools required for installation

- General tools and torque wrenches

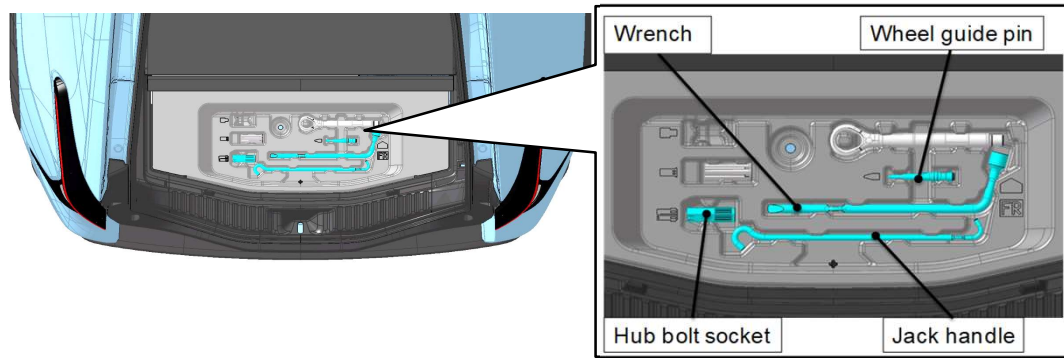
Manufacturer: **SUBARU CORPORATION**

Installation overview

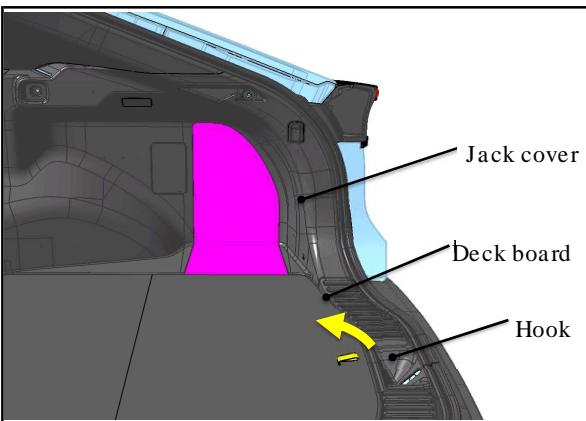
<Jack position>



<Jack handle and wrench positions>

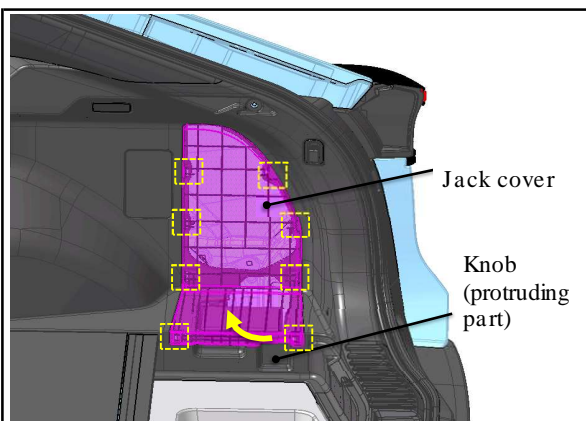


Installation procedure

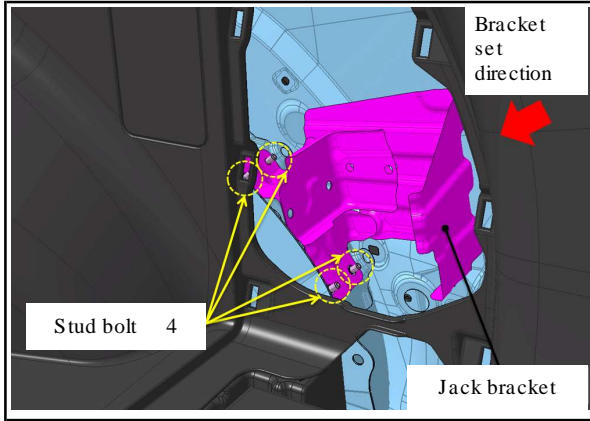


Jack cover removal

1. Open the deck board.

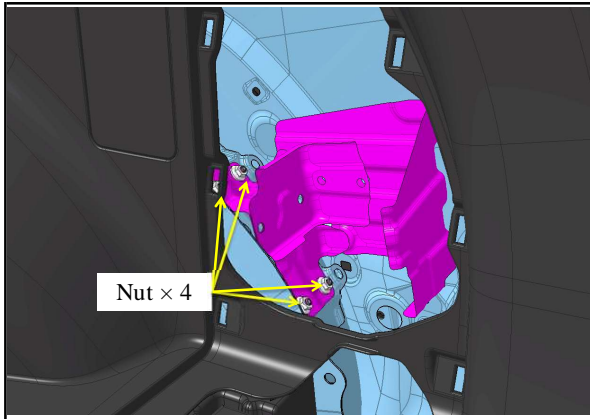


2. Grasp the jack cover knob (protruding part), release the eight claws (indicated by the dotted squares), and remove the jack cover.



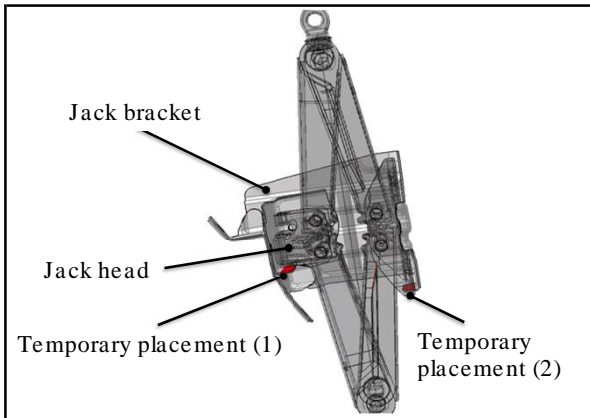
Jack installation

1. Set the jack bracket on the stud bolts (indicated by the dotted circles).



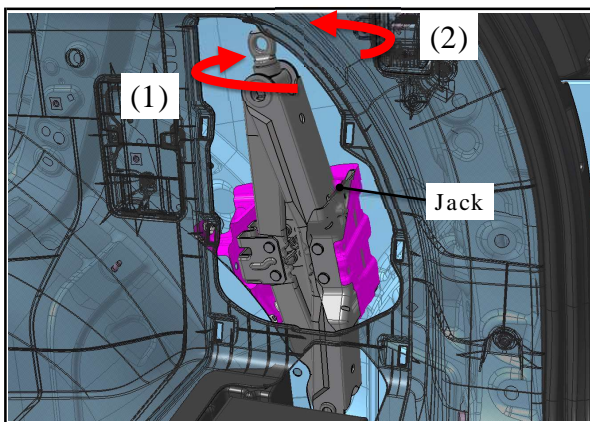
2. Tighten the jack bracket with M6 nuts (four tightening points).*

* The tightening torque for the nut is 10.0 N·m.



3. Set the jack head end on the temporary placement (1) position, open the jack, and hook the jack on the temporary placement (2) position.

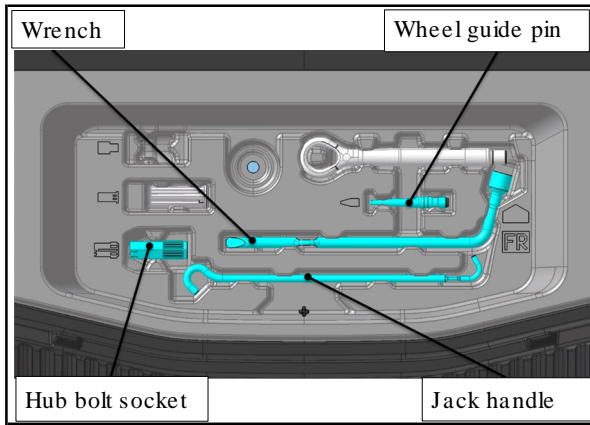
* The procedure for the temporary placement (1) and (2) positions are reversible.



4. Attach the jack to the jack bracket.

*Secure the jack and jack bracket so that they will engage.

(1) Tighten
(2) Loosen



Jack handle and wrench installation
1. Install the jack handle, wrench, hub bolt socket, and wheel guide pin on the tool tray in the positions shown in the figure on the left-hand side.

Restoration

Install the removed vehicle parts as they were before.

Caution

Be careful not to allow the parts to pinch the vehicle harness, interfere with sharp edges, or damage other vehicle parts during restoration.