



SUBARU

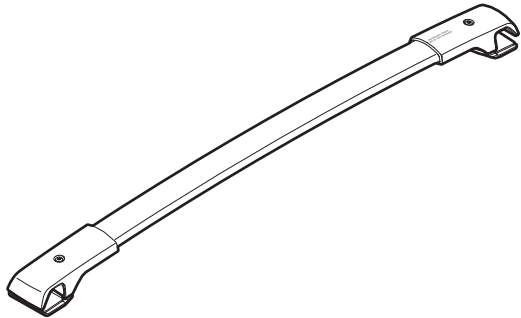
PART NUMBER: E361SSC000

DESCRIPTION: CROSSBAR KIT

**INSTALLATION
INSTRUCTIONS**

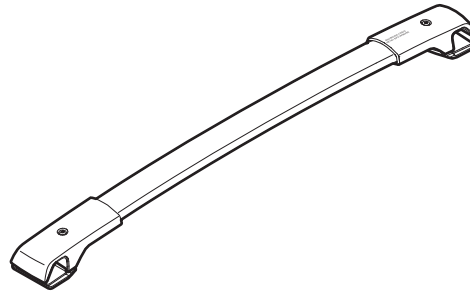
FOR FORESTER ROOF RAILS

A KIT CONTENTS:



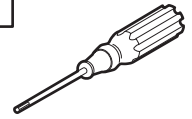
Front Crossbar Assembly 1x

B



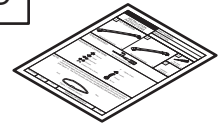
Rear Crossbar Assembly 1x

C



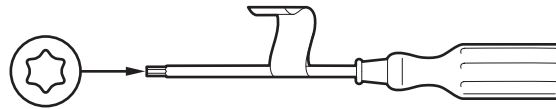
Torx Head
Screw Driver 1x

D



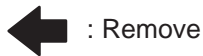
Installation
Instructions 1x

TOOLS REQUIRED



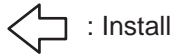
Torx Head Screwdriver (T-30)

MEANING OF CHARACTERS:

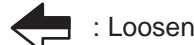


: Remove

T : Tighten Torque



: Install



: Loosen



: Disconnect



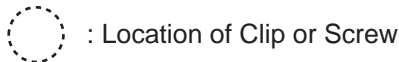
: Discard



: Connect



: Re use



: Location of Clip or Screw

NOTE: On the bottom of each crossbar you will find a molded arrow indicating the direction of the mount. If they are not present, orient with the larger section of the crossbar towards the front of vehicle (see Figure 1). **MAXIMUM LOAD** requirements can be found molded on top of crossbars (see Figure 2).

Front



Rear

Figure 1 - Crossbar (section)

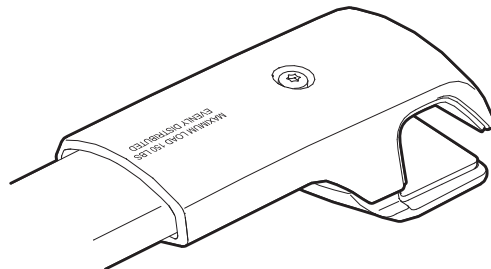


Figure 2 - Maximum Load

PART NUMBER
E361SSC000

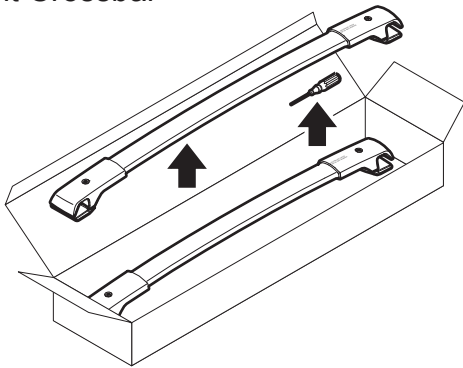
ISSUE
01

DATE
08/21/07

SUBARU OF AMERICA

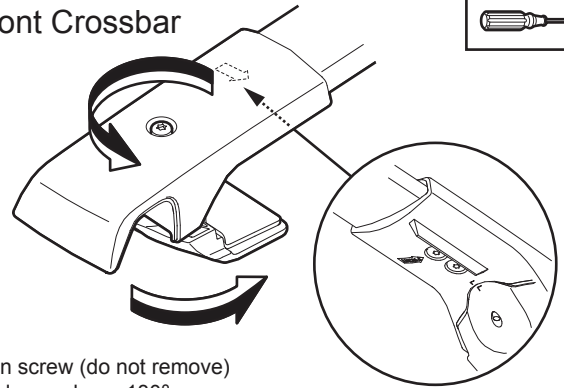
PAGE
1/2

1 Front Crossbar



Note: Front Crossbar is longer than the Rear Crossbar.

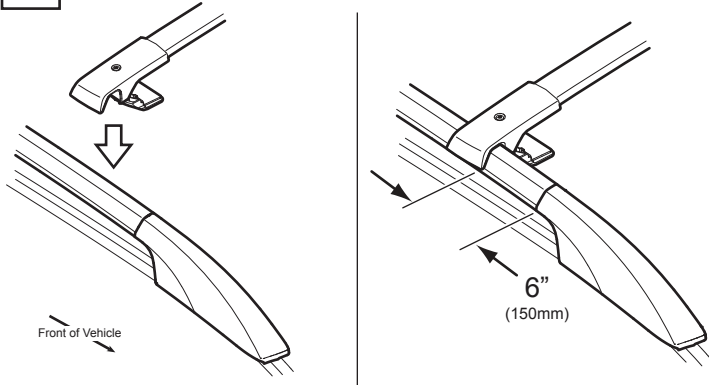
2 Front Crossbar



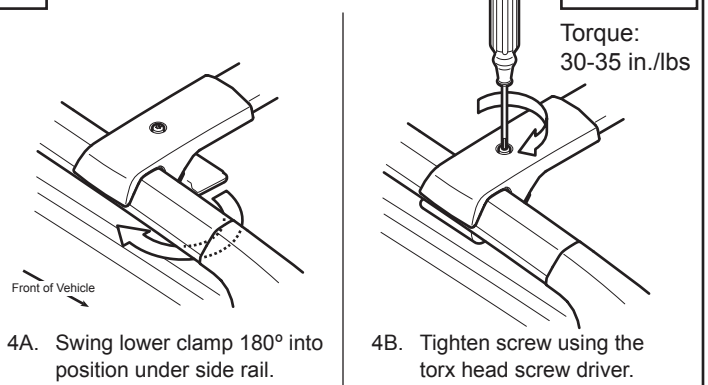
2A. Loosen screw (do not remove)
2B. Swing lower clamp 180°

Note: Orient using front of vehicle arrow molded on underside of crossbar

3 Front Crossbar



4 Front Crossbar

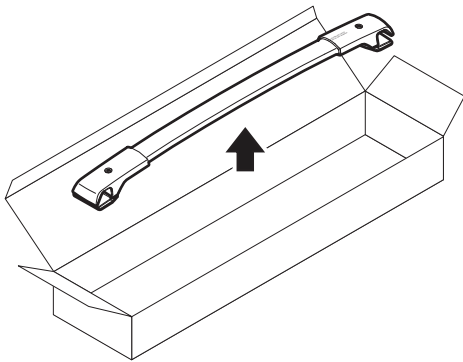


4A. Swing lower clamp 180° into position under side rail.

4B. Tighten screw using the torx head screw driver.

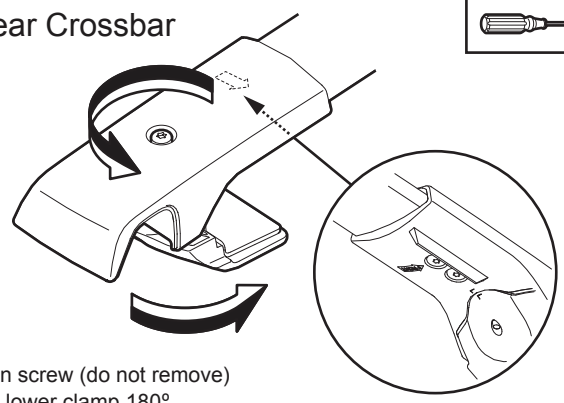
Torque:
30-35 in./lbs

5 Rear Crossbar



Note: Rear Crossbar is shorter than the Front Crossbar.

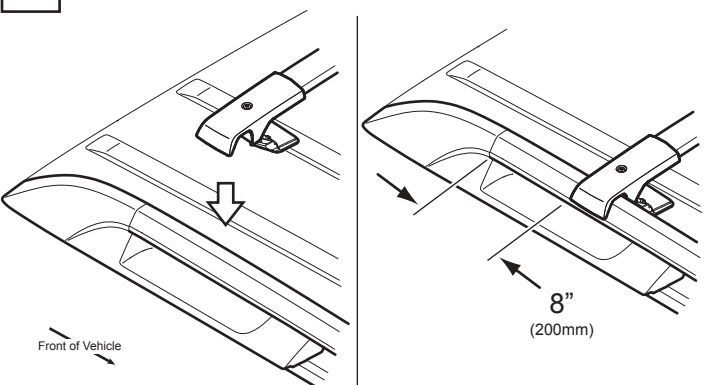
6 Rear Crossbar



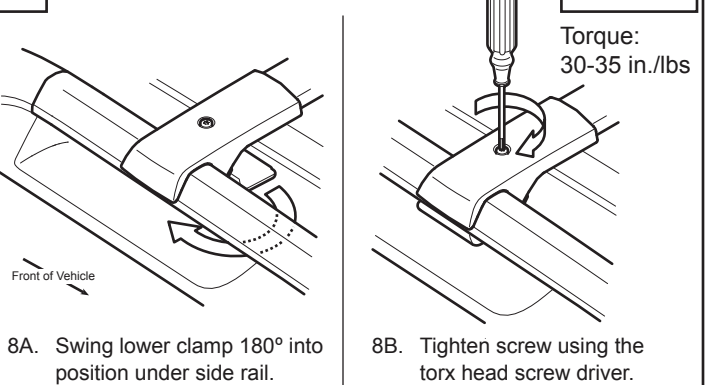
2A. Loosen screw (do not remove)
2B. Swing lower clamp 180°

Note: Orient using front of vehicle arrow molded on underside of crossbar

7 Rear Crossbar



8 Rear Crossbar



8A. Swing lower clamp 180° into position under side rail.

8B. Tighten screw using the torx head screw driver.

Torque:
30-35 in./lbs

PART NUMBER
E361SSC000

ISSUE
01

DATE
08/21/07

SUBARU OF AMERICA

PAGE
2/2