

2019MY Forester (ES1) Halogen Fog Lamp Accessory Installation P# H4510SJ000

Inspect the Fog Lamp Kit parts to ensure no missing parts or part defects:



The 2019MY Forester (ES1) Fog Lamp Kit P# H4510SJ000 Contents:

PART #	PART NAME	QTY
84501AJ060	FOG LAMP ASSY F	2
H4510XC500	FOG LAMP SWITCH US	1
82501AG05B	RELAY ASSY	1
902510032	J-NUT M6	2
901000171	BOLT FLG 6X21	2
909310002	SCREW RIVET	2



Stop: Damage may occur to the vehicle/part. Do not proceed until process has been complied with.



Work Hazard Analysis (WHA): Operator safety-Use caution to avoid risk of injury.



Caution: A process that must be carefully observed in order to reduce the risk of damage to the accessory/vehicle and to ensure a quality installation.



Revision Mark/Highlight: This mark highlights a change in installation with respect to the previous issue.



Work Instruction Training (WIT): Key point that designates an important step to ensure the quality of the installation.



Recycle: Item to be recycled.



Safety Torque - This mark indicates that a torque is related to safety

2019MY Forester (ES1) Halogen Fog Lamp Accessory Installation P# H4510SJ000

Required Tools and Supplies

- Clip removal tool
- ¼" drive torque wrench (in. lbs.)
- #2 Phillips Screwdriver
- Small flat blade screw driver (optional)
- ¼" drive ratchet
- ¼" drive 4" Extension
- 10mm socket
- Nylon trim tool
- Scotty Peeler Tool (Optional)
- Clean towels (Micro-fiber)
- 99% Alcohol
- Paint "torque" marker
- Window Glass Cleaner (Optional)



Scotty Peeler™
Tool P# SPN-1.
www.scottypeeler.com



2019MY Forester (ES1) Halogen Fog Lamp Accessory Installation P# H4510SJ000



Open the hood and use the prop rod to hold the hood open. Using a ¼" drive ratchet and 12mm socket remove the negative battery cable from the negative battery stud. Do not remove negative cable from the battery post. Position / protect the negative cable so it cannot accidentally touch body ground or the negative battery terminal. Allow (60) seconds before the next installation step to ensure the airbag power supply is discharged.

⚠ Carefully remove the negative battery cable from the battery stud only. Do not allow the negative cable accidentally ground during the installation.

2019MY Forester (ES1) Halogen Fog Lamp Accessory Installation P# H4510SJ000

Install the Fog Light Relay in the Relay Box

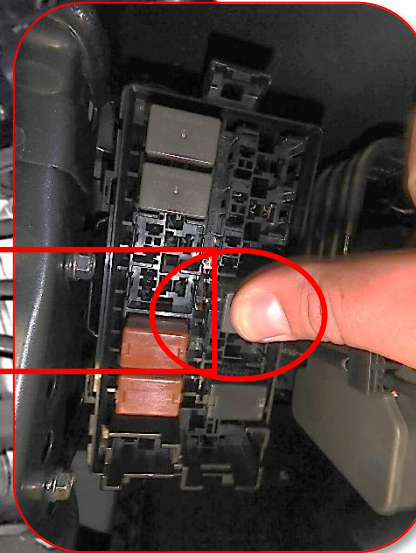
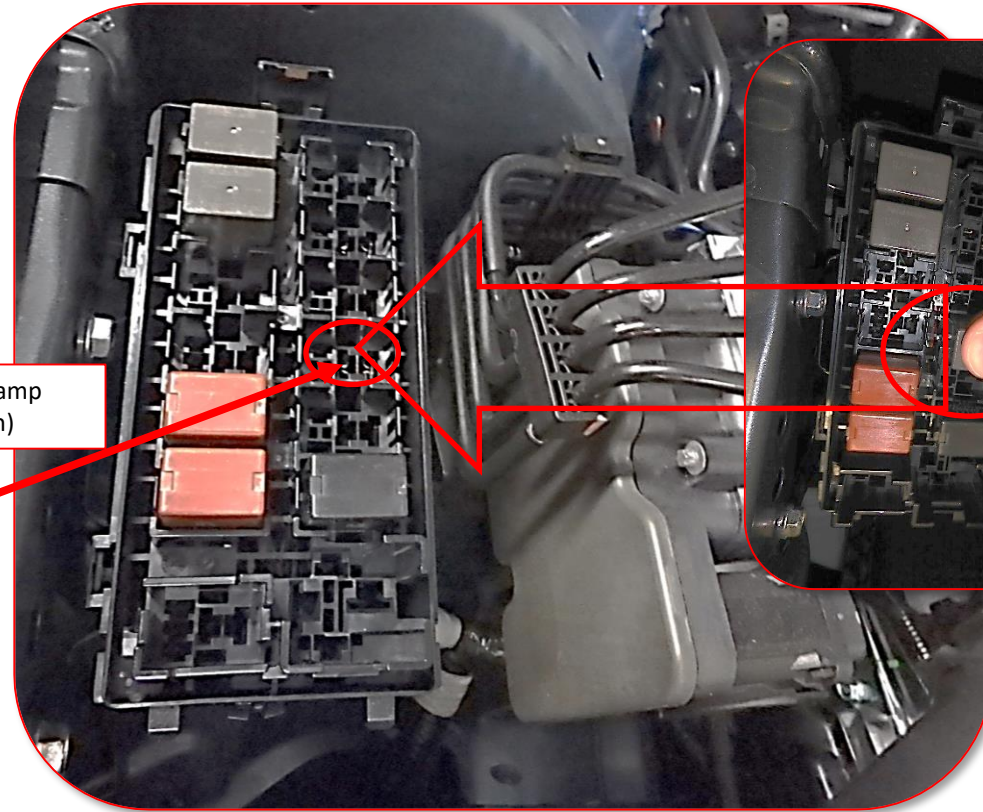
Locate the relay box under the hood on the right side of the vehicle in the engine compartment. Remove the plastic lid and locate the slot. Reinstall the relay box top and ensure it is in place.

Insert the Fog Light Relay in the Relay Box Slot #4



Slot #4 (Fog Lamp Relay Location)

#4

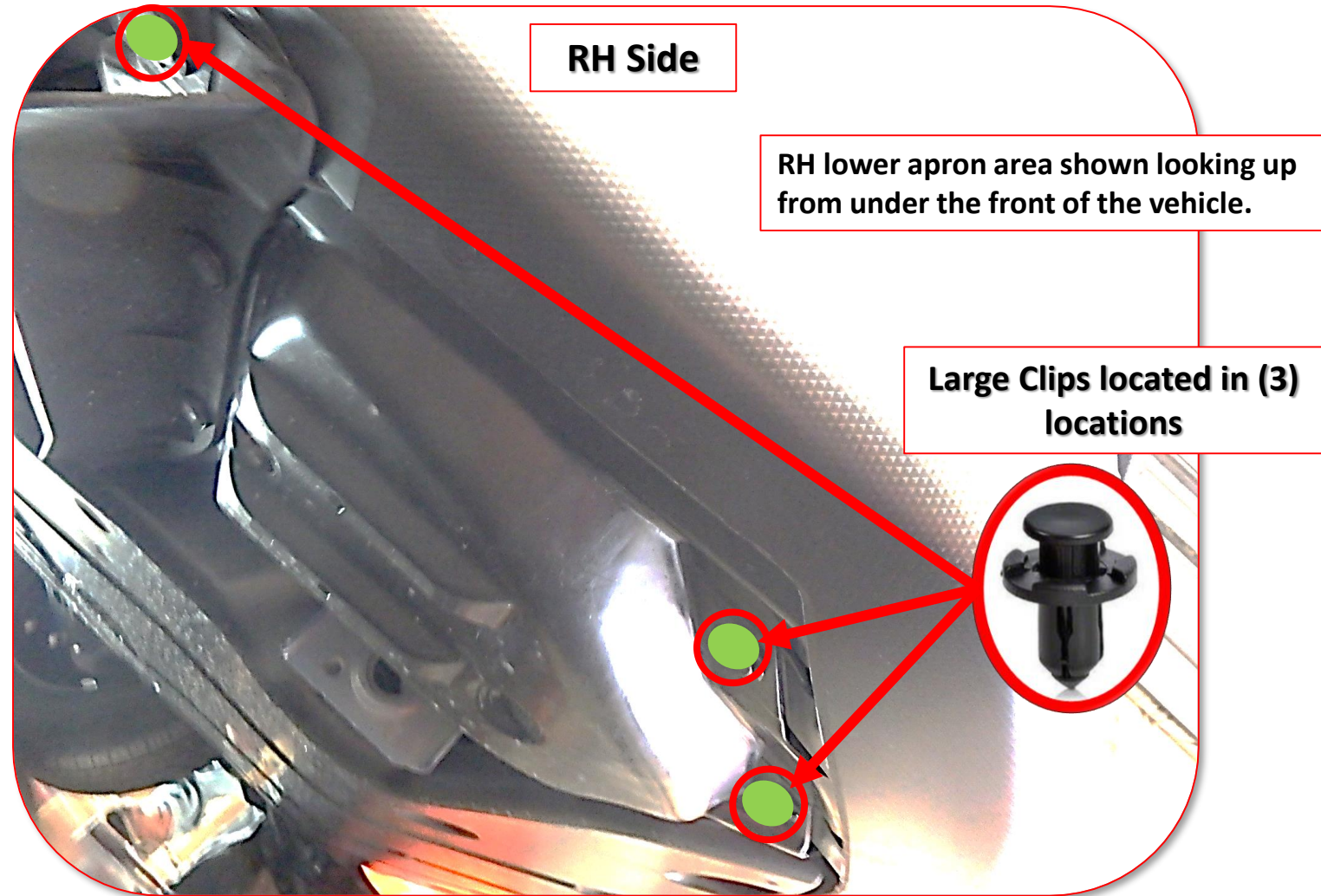


Reinstall the relay box top and ensure it is in place.

2019MY Forester (ES1) Halogen Fog Lamp Accessory Installation P# H4510SJ000

Access the Fog Light Area

1. Remove (3) large clips using a nylon trim tool from the LH & RH lower apron area to gain access to the inner front bumper area to install the LH and RH fog lamp assemblies.



RH Side

RH lower apron area shown looking up from under the front of the vehicle.

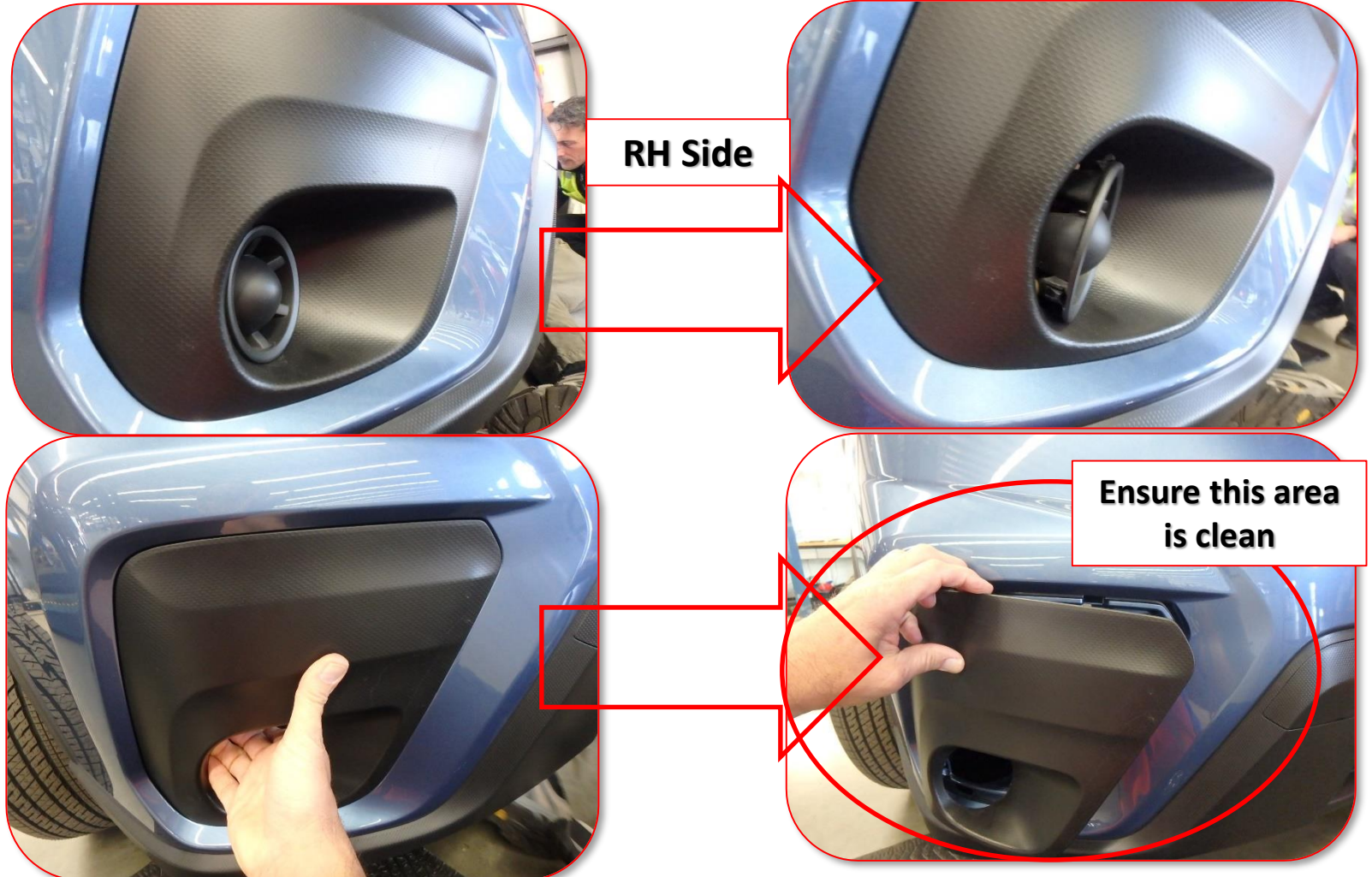
Large Clips located in (3) locations

 **The clips will be reused so be careful not to damage them during removal.**

2019MY Forester (ES1) Halogen Fog Lamp Accessory Installation P# H4510SJ000

Remove the LH and RH exterior front bumper covers

1. Carefully remove the fog light cover center light bezel. Do not damage the cover assembly because it will be reused.
2. Reach into the light cover opening and carefully pull straight out to release the (10) cover clips and (3) guides from the front bumper skin.
3. Place the covers in a secure place to prevent scratch or other damages. Recycle dispose of the covers.
4. Using a clean towel, clean around the fog light bezel area of the front bumper both front LH and RH sides.



⚠ Do not scratch the front bumper area where the bezel is removed.

2019MY Forester (ES1) Halogen Fog Lamp Accessory Installation P# H4510SJ000

Install the LH and RH Fog lamp assemblies

1. The fog lamp assembly is the same for the RH and LH sides.
2. The tabs fit into the slots on the outside of the front bumper skin and the clip at the top and lower 10mm bolt locations align with the holes in the tabs.

The fog lamp assembly is the same for the RH and LH sides.

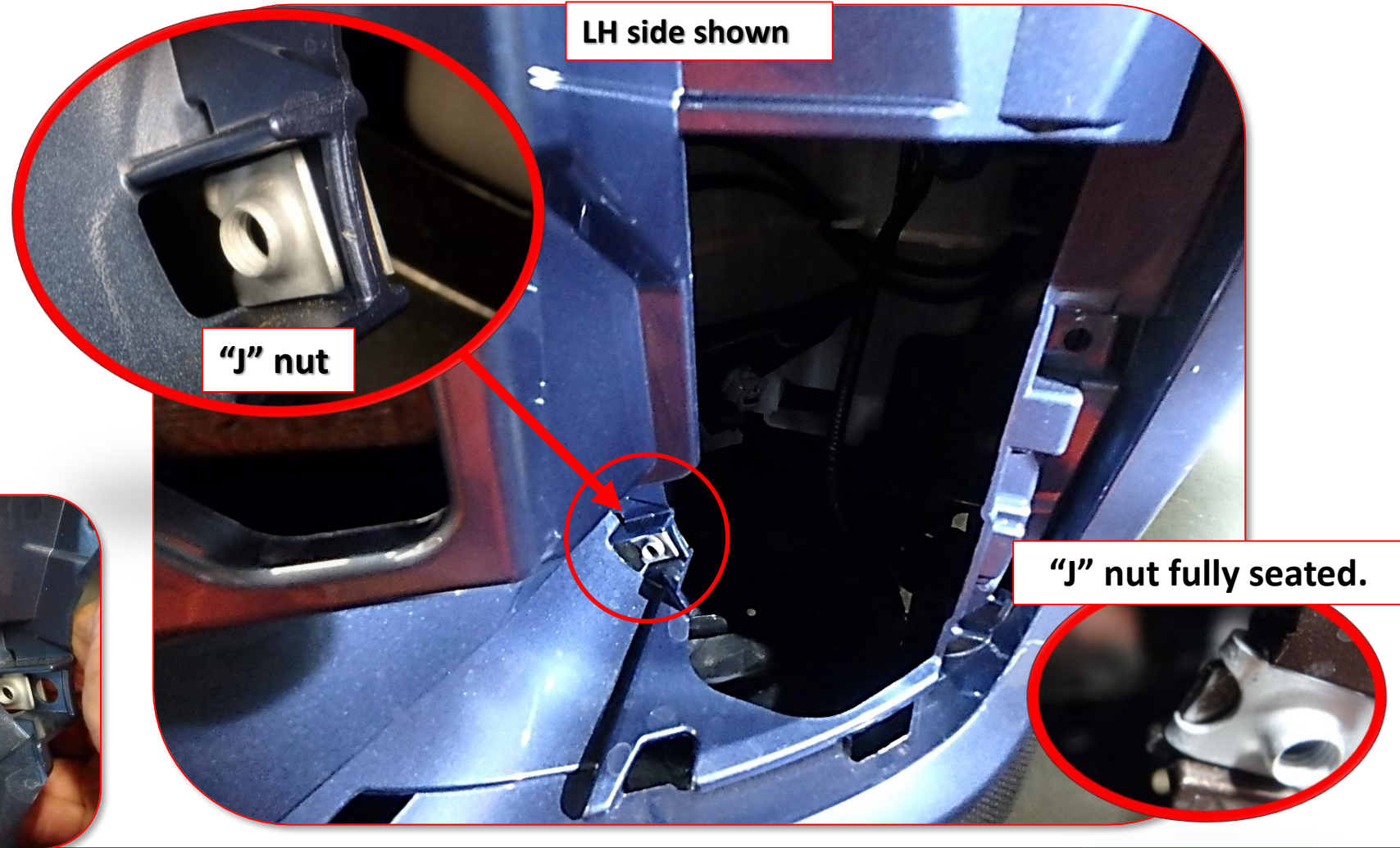


The Front Bumper Skin Tabs and Clip & 10mm Bolt holes in the tabs.

2019MY Forester (ES1) Halogen Fog Lamp Accessory Installation P# H4510SJ000

Install the LH and RH Fog lamp assemblies

1. Install the "J" nut on the bottom inner front bumper skin location from the opening inner side.
2. The "J" nut threaded portion goes to the outside.
3. Repeat on the opposite side.
4. Ensure the "J" nut is fully seated with the bumper skin locating tab .



⚠ Ensure the "J" nut and Fog Lamp tabs are properly installed in the front bumper areas as shown

2019MY Forester (ES1) Halogen Fog Lamp Accessory Installation P# H4510SJ000

Locate the LH and RH Fog light prewired connectors

1. Locate the RH and LH fog light connectors in the front bumper fog light openings. Remove the connectors and harness from the “blue” break away tape.



RH side shown

⚠ Never use sharp tools such as a box cutter or side cutting pliers or razor blades to cut the break-away tape. Wiring can be accidentally cut or wire covering permanently damaged as a result of using sharp edged tools. Only use blunt tools such as a tape end wrapped flat blade screw driver. For “Pink” or “Black” break-away tape, un-wrap the tape to remove it because it is hard to break away and permanent damage can occur if not handled with proper care.

2019MY Forester (ES1) Halogen Fog Lamp Accessory Installation P# H4510SJ000

RH under bumper opening side shown

Install the RH and LH Fog lamp assemblies

1. Locate the O.E. fog lamp connector and plug in the connector to the fog lamp assembly.
2. Listen for the audible “click” of the connector lock. Ensure proper connection by carefully push-pull on the connector.



⚠ Never use sharp tools such as a box cutter or side cutting pliers or razor blades to cut the break-away tape. Wiring can be accidentally cut or wire covering permanently damaged as a result of using sharp edged tools. Only use blunt tools such as a tape end wrapped flat blade screw driver. For “Pink” or “Black” break-away tape, un-wrap the tape to remove it because it is hard to break away and permanent damage can occur if not handled with proper care.

2019MY Forester (ES1) Halogen Fog Lamp Accessory Installation P# H4510SJ000

Install the RH and LH Fog lamp assemblies

1. Carefully position the fog lamp to the inside of the front bumper skin opening.
2. Carefully slide the (2) outer tabs of the fog lamp assembly into the (2) front bumper skin slots.



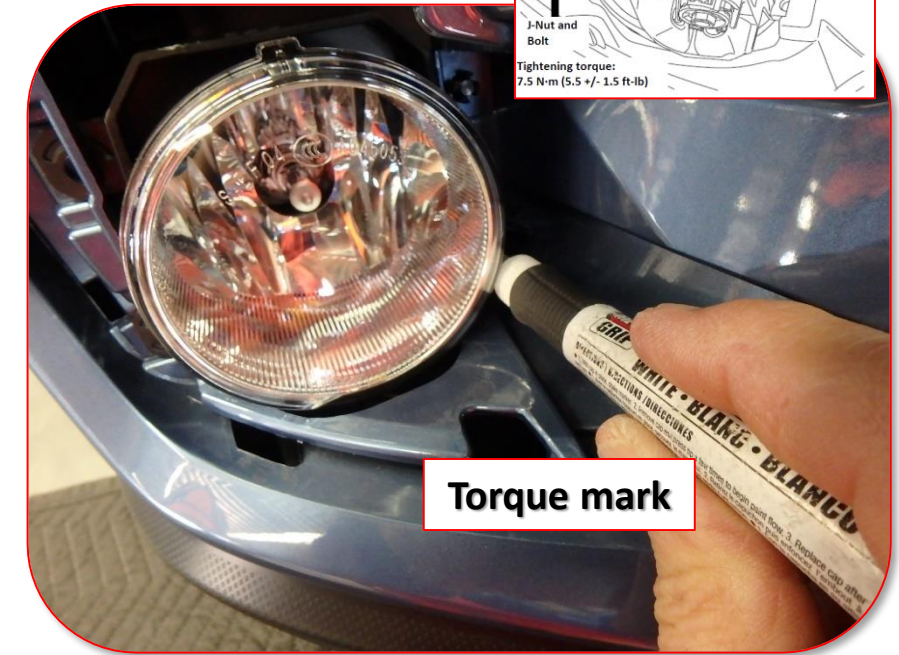
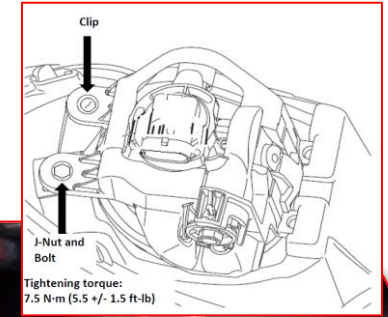
⚠ Ensure the Fog Lamp tabs are properly installed in the front bumper areas as shown

2019MY Forester (ES1) Halogen Fog Lamp Accessory Installation P# H4510SJ000

Install the RH and LH Fog lamp assemblies

1. Using the access from under the front bumper skin, position the (1) 10mm bolt through the lower inner fog lamp tab and into the "J" nut. Using a 10mm socket and an extension start the 10mm bolt by hand to ensure the bolt threads are properly positioned.
2. Using a ratchet, extension and 10mm socket loosely tighten the 10mm bolt in place.
3. Using the torque wrench, torque the 10mm bolt to 66 in. lbs.
4. Using a torque marker from the front side apply a torque mark on the end of the bolt.
5. Repeat the entire mounting process 9-12 on the opposite side.

RH bumper opening shown



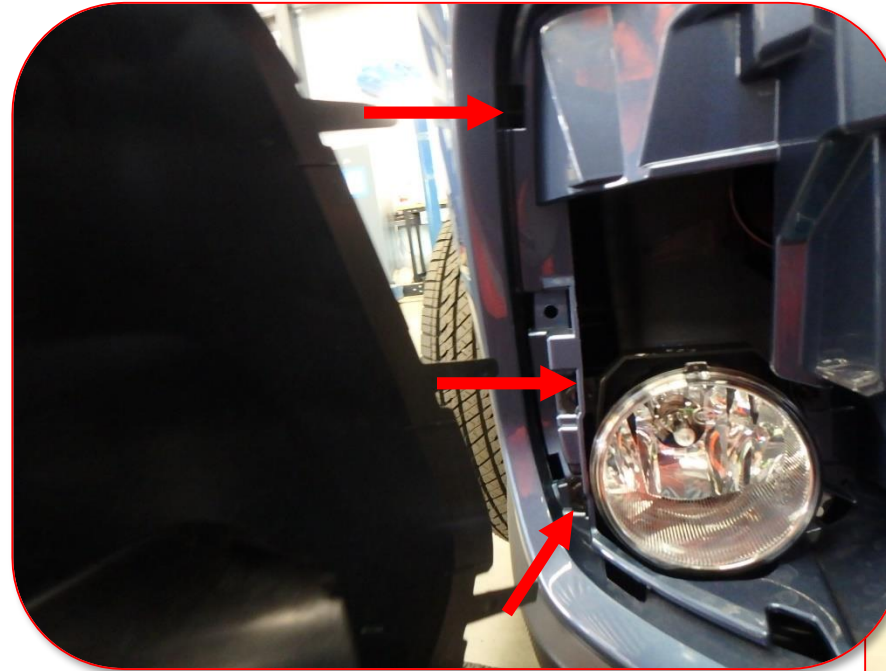
⚠ Ensure the Fog Lamp 10mm bolt is properly installed and torqued to 66 in.lbs. and properly torque marked.

2019MY Forester (ES1) Halogen Fog Lamp Accessory Installation P# H4510SJ000

Reinstall the RH and LH front bumper fog lamp covers

1. Carefully position the fog light cover in place by aligning the (3) longer outer tabs.
2. Push in on the tabs while aligning the (10) tabs that surround the fog lamp cover.
3. Push in around the entire cover.
4. Ensure no cover gaps.
5. Using a clean towel, clean around the fog light cover and bumper skin areas.
6. Repeat the process on the opposite side.

RH bumper opening shown

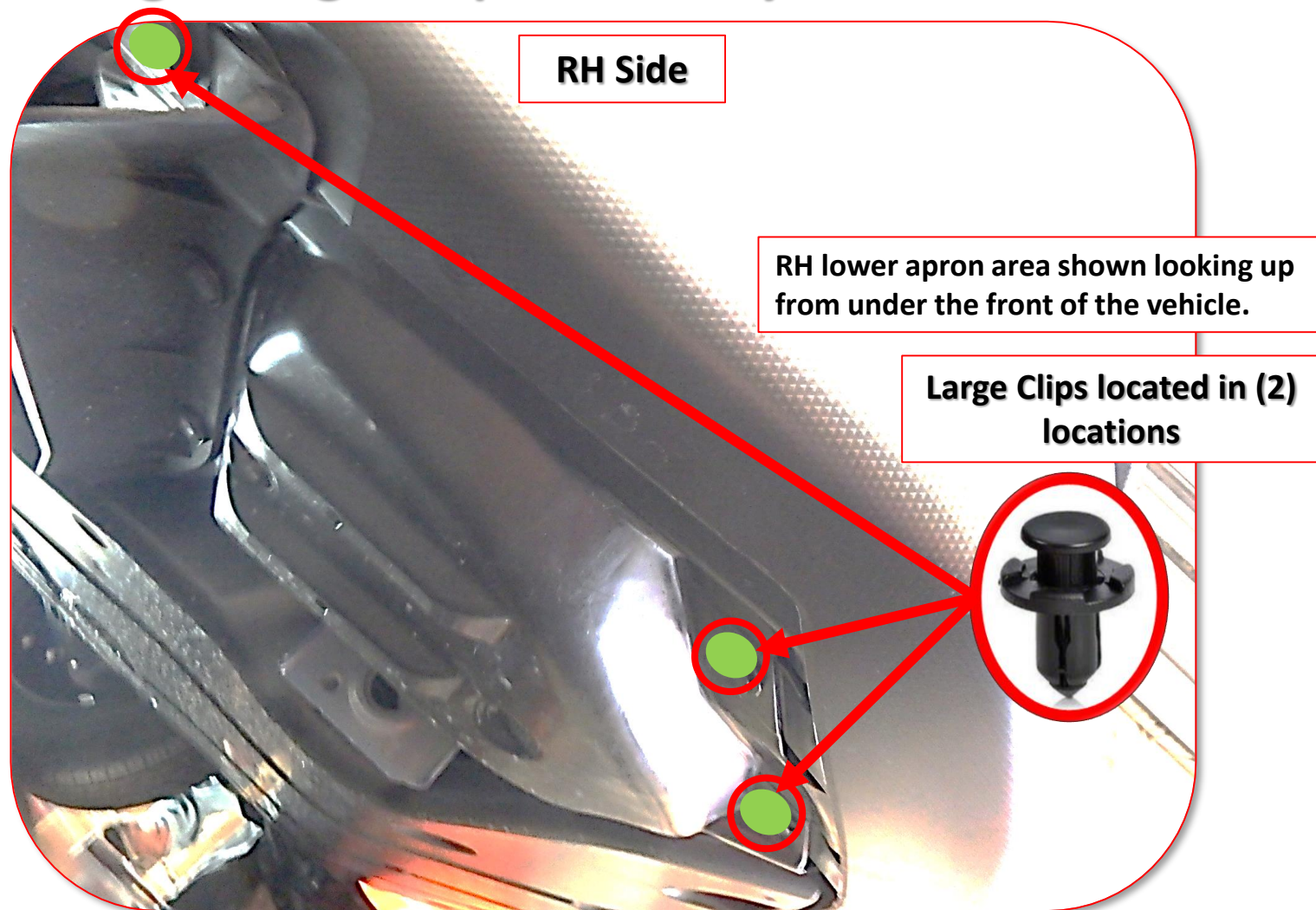


 Do not scratch the front bumper area when reinstalling the fog lamp cover.

2019MY Forester (ES1) Halogen Fog Lamp Accessory Installation P# H4510SJ000

Reinstall Lower Panel

1. Reinstall the RH & LH lower apron panels using the saved (3) large clips.
2. Ensure the LH & RH lower aprons are properly and securely repositioned. assemblies.

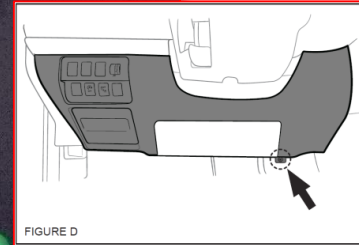
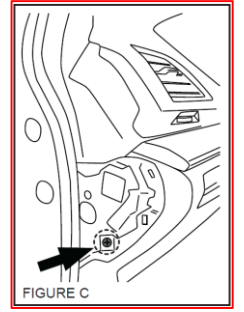
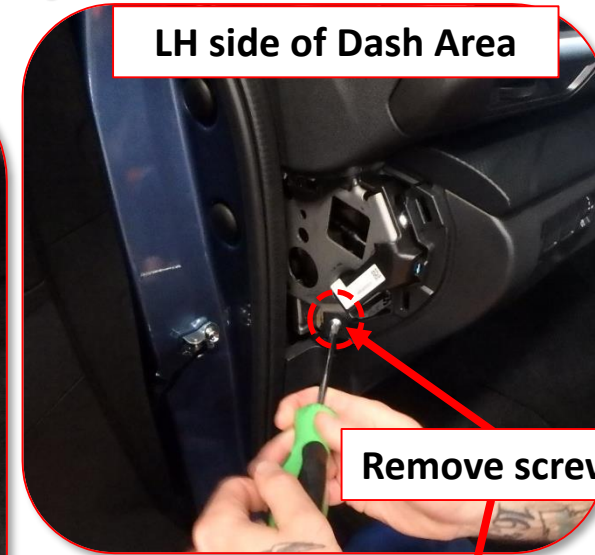
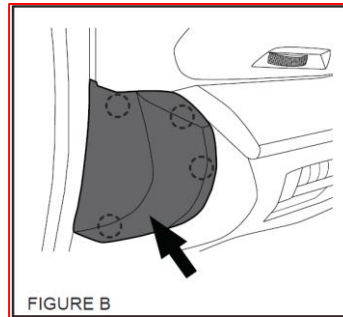
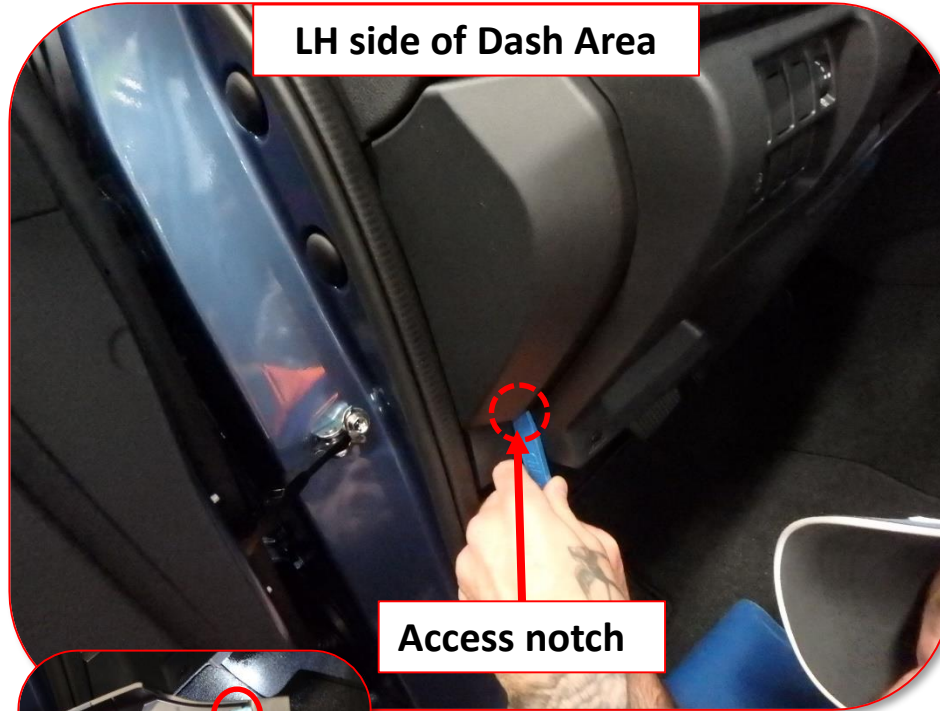


 **The clips will be reused so be careful not to damage them during removal.**

2019MY Forester (ES1) Halogen Fog Lamp Accessory Installation P# H4510SJ000

Removing LH lower dash

1. Remove LH side panel by inserting nylon trim tool at bottom of access notch.
2. Place the panel aside for reinstallation.
3. Remove (2) screws on the LH and RH sides of the lower dash panel.
4. Save the screws.



2019MY Forester (ES1) Halogen Fog Lamp Accessory Installation P# H4510SJ000

Removing LH lower dash

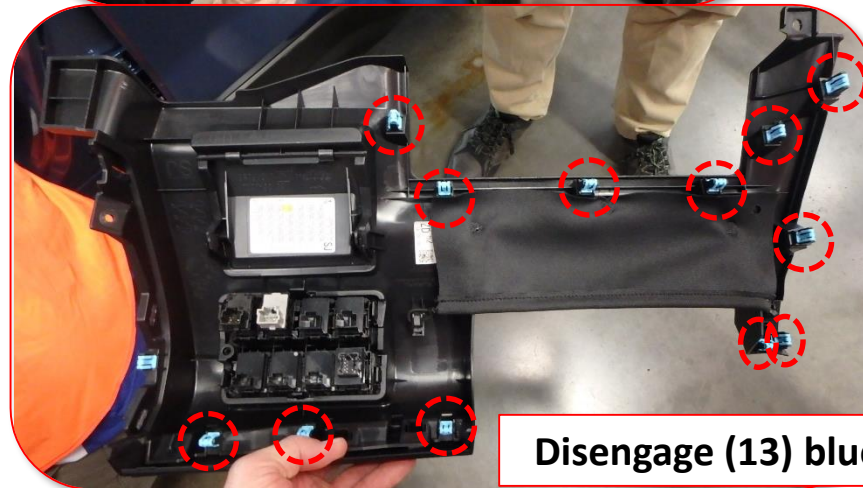
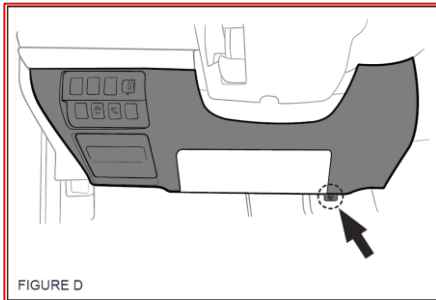
1. Carefully Remove lower dash panel by pulling straight out to disengage (13) blue clips.
2. Carefully unplug all switch connectors.



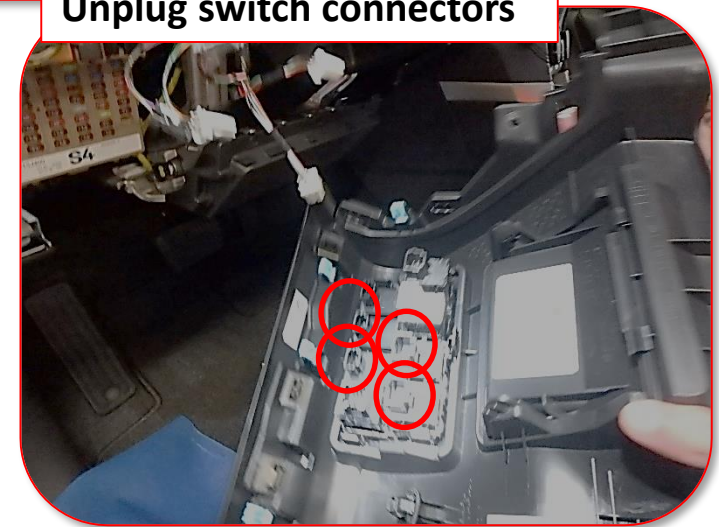
Carefully Pull the panel straight out



Unplug switch connectors



Disengage (13) blue clips.



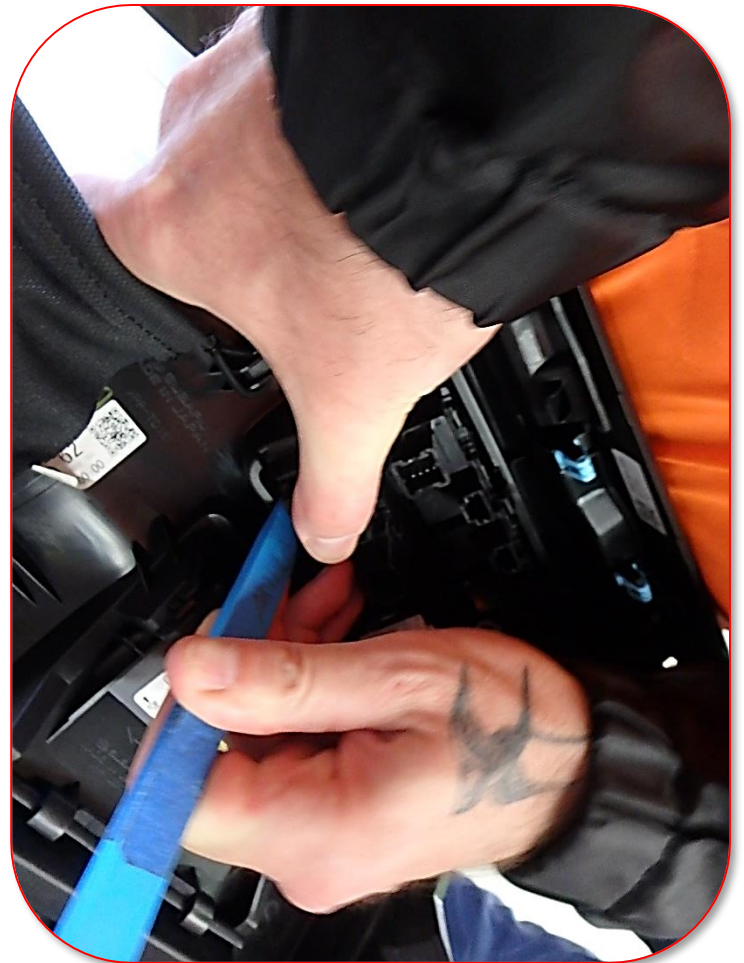
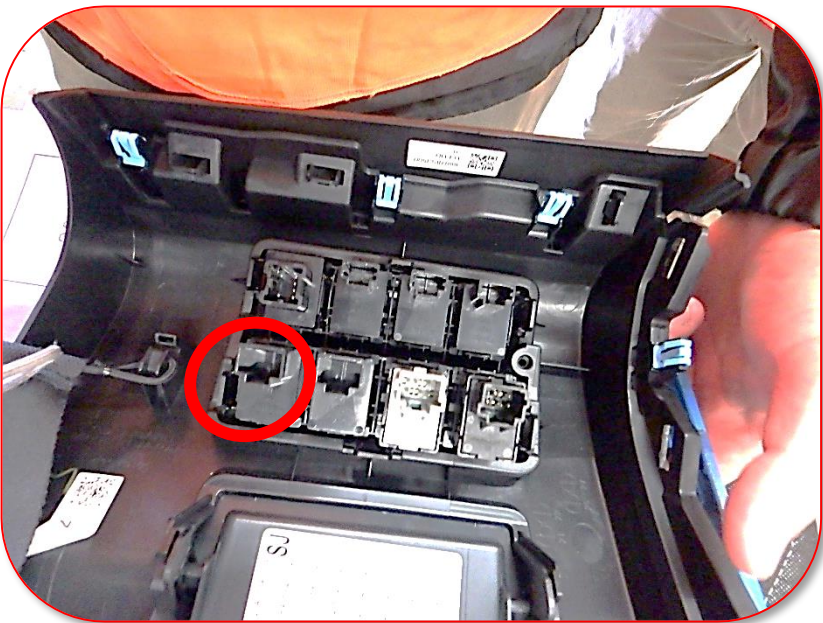
2019MY Forester (ES1) Halogen Fog Lamp Accessory Installation P# H4510SJ000

Install the Fog Lamp Switch

1. Locate the lower right blank switch cover on the lower dash panel.
2. Using a nylon trim tool or Scotty Peeler Tool, carefully spread the clips to allow the blank cover to be removed.
3. Dispose/ recycle the switch blank cover.



LH side of steering column

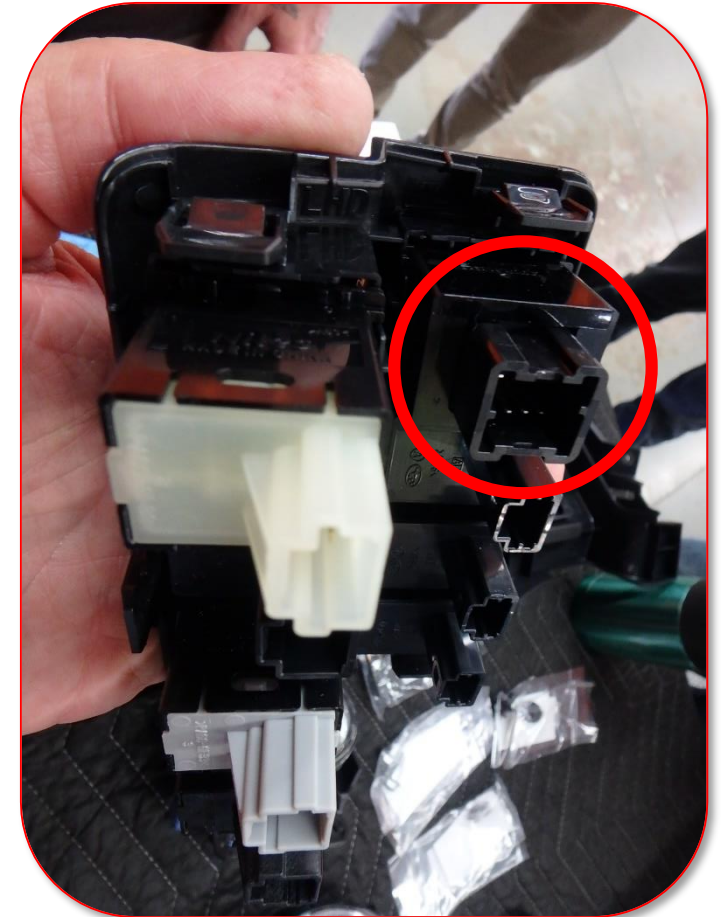


2019MY Forester (ES1) Halogen Fog Lamp Accessory Installation P# H4510SJ000

Install the Fog Lamp Switch

1. Install the fog lamp switch. It only fits in the correct position.
2. Listen for the audible “snap” sound when the switch is seated in place.
3. Ensure the fog lamp switch is secure in place.

LH side of steering column

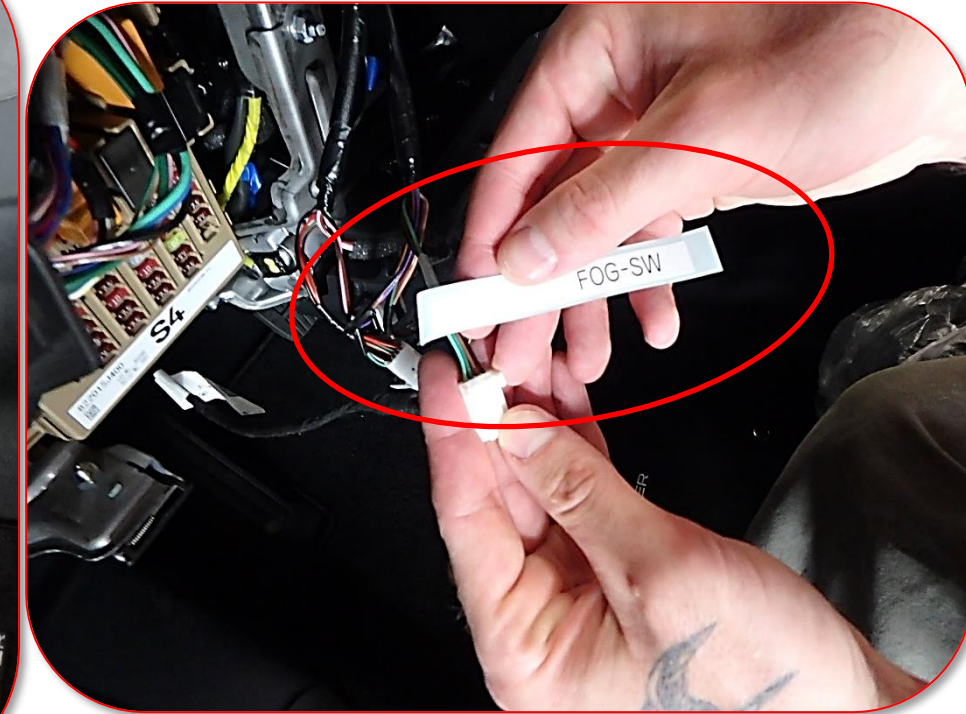
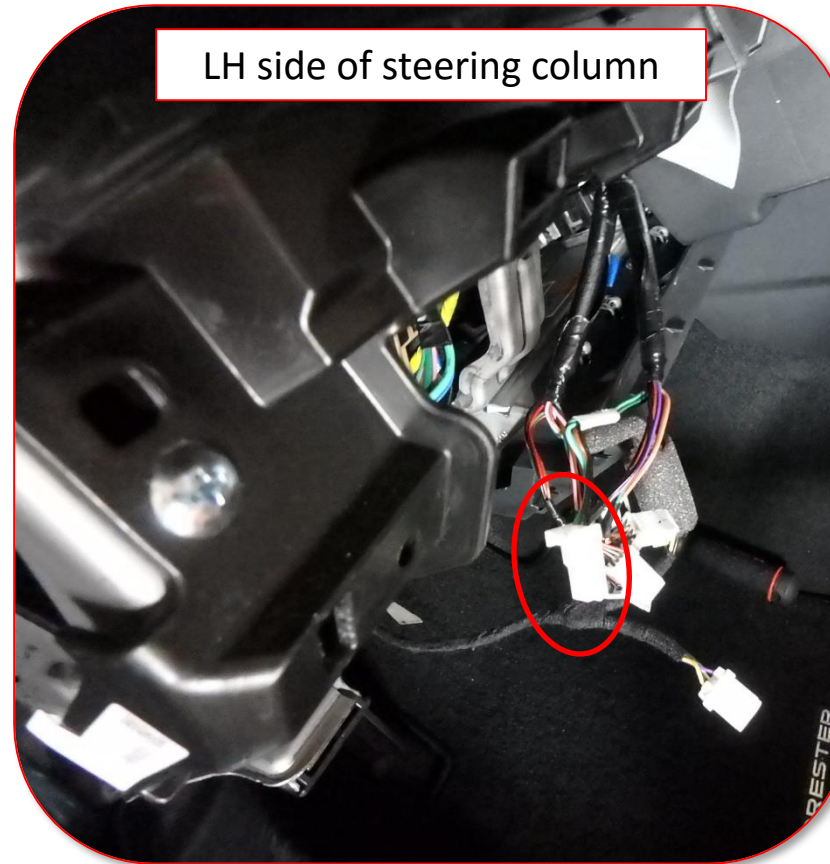


⚠️ Note: the fog lamp switch can only fit in the slot in the correct position.

2019MY Forester (ES1) Halogen Fog Lamp Accessory Installation P# H4510SJ000

Install the Fog Lamp Switch

1. Locate the fog lamp switch harness connector that is “breakaway” taped to the harness.
2. Carefully remove the “breakaway” tape to release the (8 pin) fog lamp connector
3. Locate the fog lamp harness identification flag and install the flag on the fog lamp connector harness.



⚠ Never use sharp tools such as a box cutter or side cutting pliers or razor blades to cut the break-away tape. Wiring can be accidentally cut or wire covering permanently damaged as a result of using sharp edged tools. Only use blunt tools such as a tape end wrapped flat blade screw driver. For “Pink” or “Black” break-away tape, un-wrap the tape to remove it because it is hard to break away and permanent damage can occur if not handled with proper care.

2019MY Forester (ES1) Halogen Fog Lamp Accessory Installation P# H4510SJ000

Install the Fog Lamp Switch

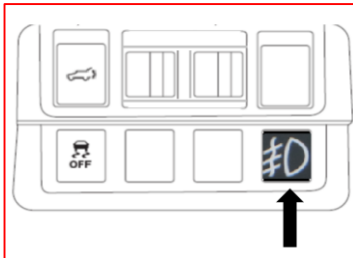
1. Plug-in the fog lamp connector, ensure the connector is properly locked in place. Carefully push-pull on the switch connector.



2019MY Forester (ES1) Halogen Fog Lamp Accessory Installation P# H4510SJ000

Install the Fog Lamp Switch

1. Ensure the fog lamp switch is secure in the lower right bottom corner of the switch panel.



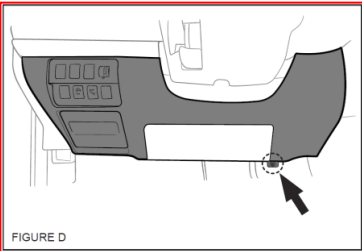
LH side of steering column



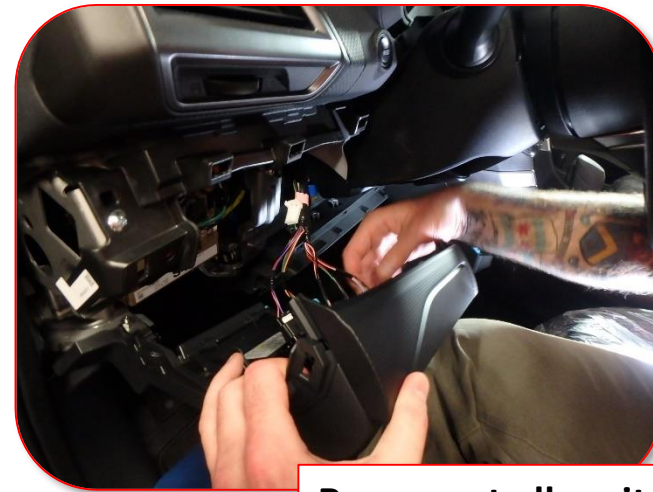
2019MY Forester (ES1) Halogen Fog Lamp Accessory Installation P# H4510SJ000

Reinstall LH lower dash

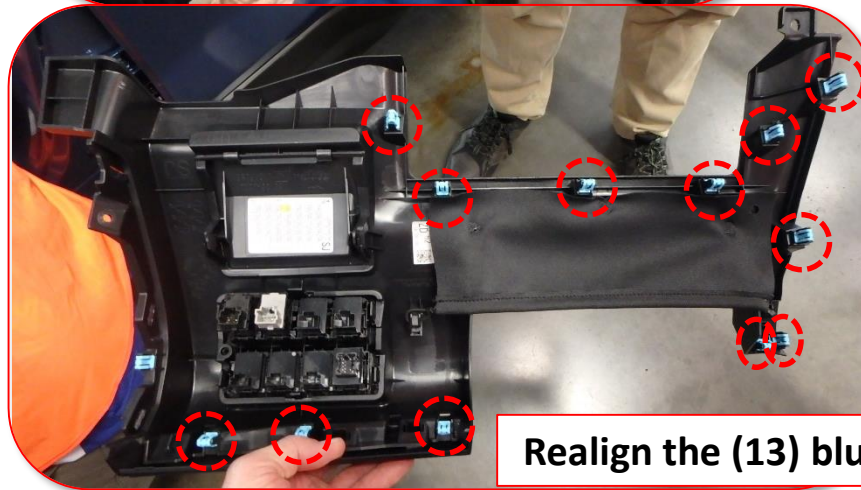
1. Carefully reconnect all switch connectors previously disconnected.
2. Carefully Realign the lower dash panel by aligning and securing (13) blue panel clips.
3. Ensure the clips around the knee air bag are securely in place with no gaps.



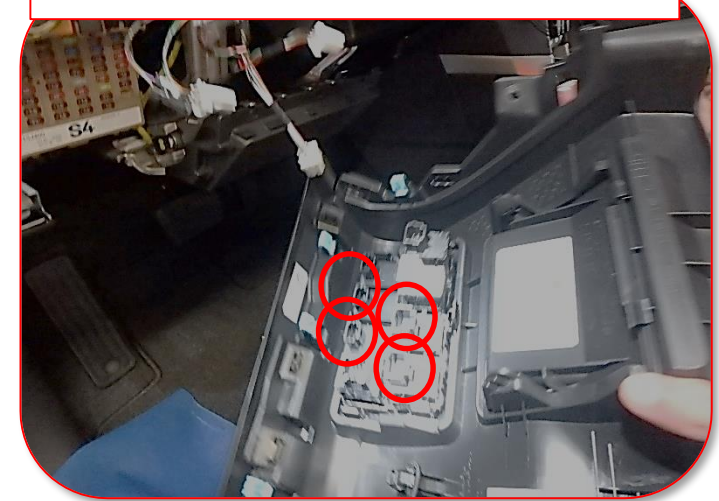
Carefully push the panel forward



Reconnect all switch connectors



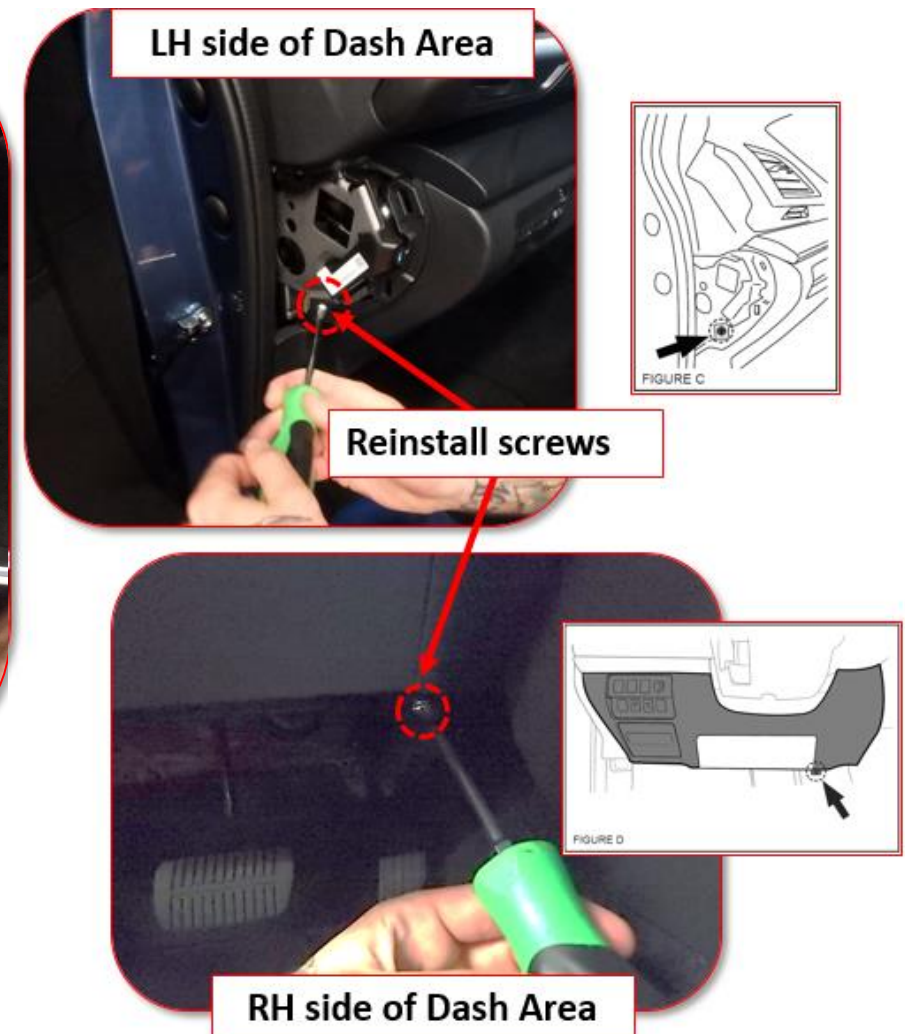
Realign the (13) blue clips.



2019MY Forester (ES1) Halogen Fog Lamp Accessory Installation P# H4510SJ000

Reinstall the LH lower dash

1. Carefully reposition the LH side panel in place
2. Reinstall the (2) saved screws on the RH lower side of the panel and (1) screw on the LH side of the lower dash panel.
3. Reinstall the LH side cover panel by aligning the (4) blue clips.
4. Ensure the LH dash cover is secure in place.
5. Ensure the clips are properly in place on the knee air bag panel.



2019MY Forester (ES1) Halogen Fog Lamp Accessory Installation P# H4510SJ000



**Disconnect the battery Negative Terminal Stud Only.
Support the negative post terminal when tightening the stud nut.**



2019MY Forester (ES1) Models

Disconnect the battery Negative Terminal Stud Only
(10mm bolt)

**Torque: 66 In. Lbs. while holding the terminal in
place.**



Carefully reinstall the negative battery cable to the battery stud only. Do not allow the negative cable accidentally ground during the installation.



Torque mark the battery stud

2019MY Forester (ES1) Halogen Fog Lamp Accessory Installation P# H4510SJ000

Check the Power Window Up & Down Operation

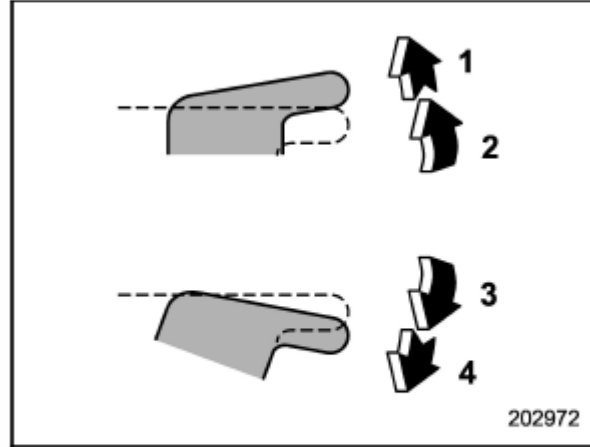
Initialization of Power Windows

If the power window automatic function does not operate properly, operate each window according to the following procedure in order to initialize the power window system.

1. Close the door.
2. Turn the ignition switch to the "ON" position.
3. Open the window completely and then press and hold down the power window switch for approximately (1) second.
4. Close the window completely and then pull and hold the power window switch for approximately (1) second.
5. Confirm the power window automatic functions operate properly.

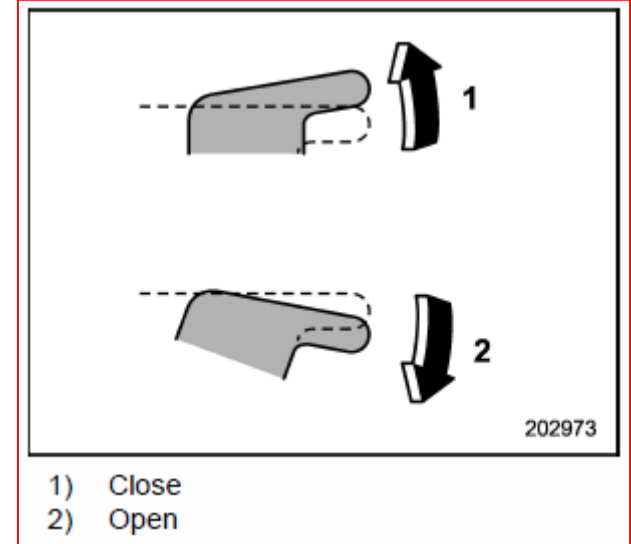
▼ Operating the window

- With one-touch auto up and down feature: S02AH0702



- 1) Automatically close*
- 2) Close
- 3) Open
- 4) Automatically open*

*: To stop the window halfway, operate the switch to the opposite side.



- 1) Close
- 2) Open

2019MY Forester (ES1) Halogen Fog Lamp Accessory Installation P# H4510SJ000

Check Your Work:

- Turn “ON” the ignition with engine “Off” and turn the lights “ON” (low Beam) and press the fog light switch to the “ON” position.
- Ensure the fog light switch is illuminated with the dash illumination and will dim or brighten using the dimmer switch.
- Exit the vehicle and ensure the fog lamps are illuminated.
- Using the light switch (stalk) put the headlamps in “High Beam” mode and exit the vehicle and ensure the fog lamps are not illuminated.
- Check the area around the fog lamps for scratches including painted areas.
- Push on the fog lamp assemblies to ensure they are firmly installed in place.
- Check the dash area for soil marks and ensure all panels are securely in place.
- Recheck the battery negative terminal for proper tightness. 66 In. Lbs. and torque mark.
- Ensure the power windows function properly.

