

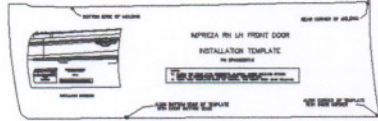


Installation
instructions

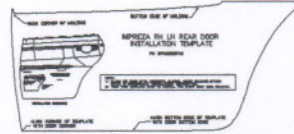
Part Number : J101SFG000XX

Description : Impreza Body Side Molding

KIT CONTENTS



INSTALLATION TEMPLATE FRONT DOOR



INSTALLATION TEMPLATE REAR DOOR



BODY SIDE MOLDING PASS SIDE FR



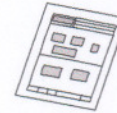
BODY SIDE MOLDING DRIVER SIDE FR



BODY SIDE MOLDING DRIVER SIDE RR



BODY SIDE MOLDING PASS SIDE RR

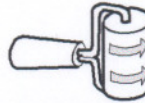


INSTALLATION
INSTRUCTIONS

TOOLS REQUIRED

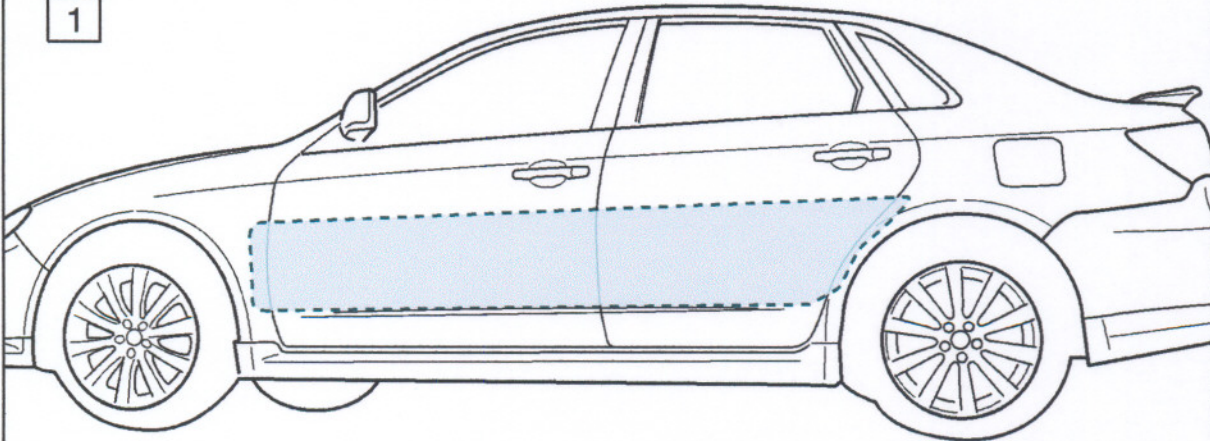


MASKING TAPE



RUBBER ROLLER

1



Clean installation area with a clean rag dampened with a solution mix of 50/50 isopropyl alcohol and water.

Part number
J101SFG000XX

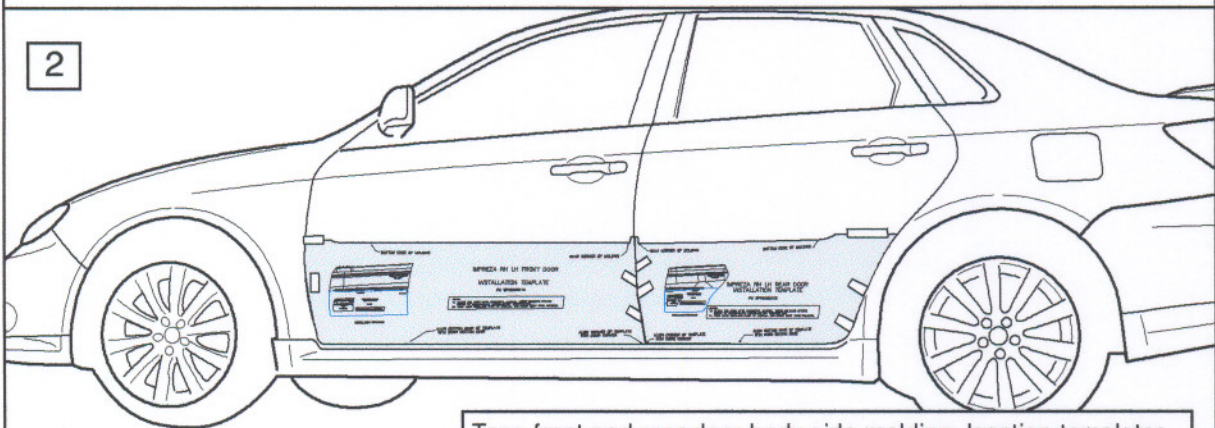
Date
04-06-07

Subaru of America

Page
1/2

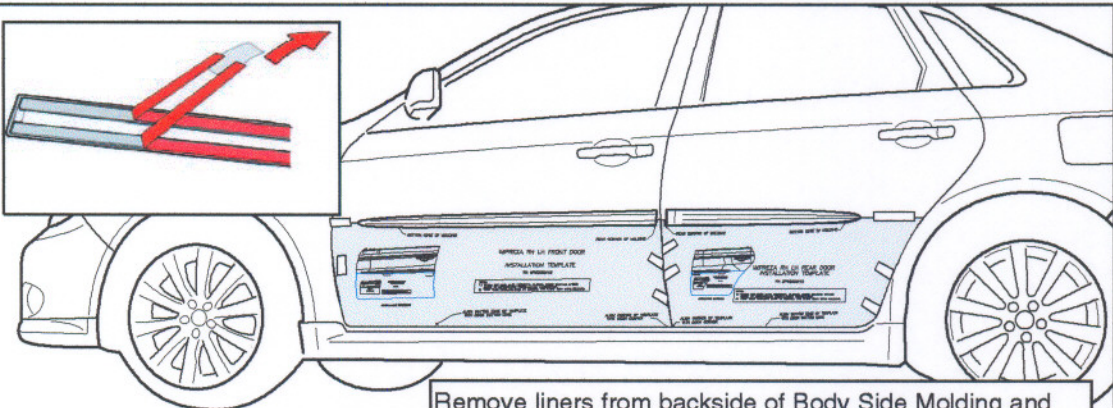
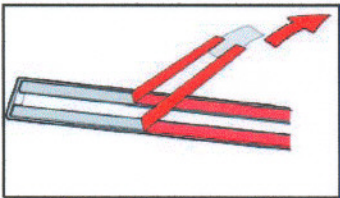
BODY SIDE MOLDING INSTALLATION

2



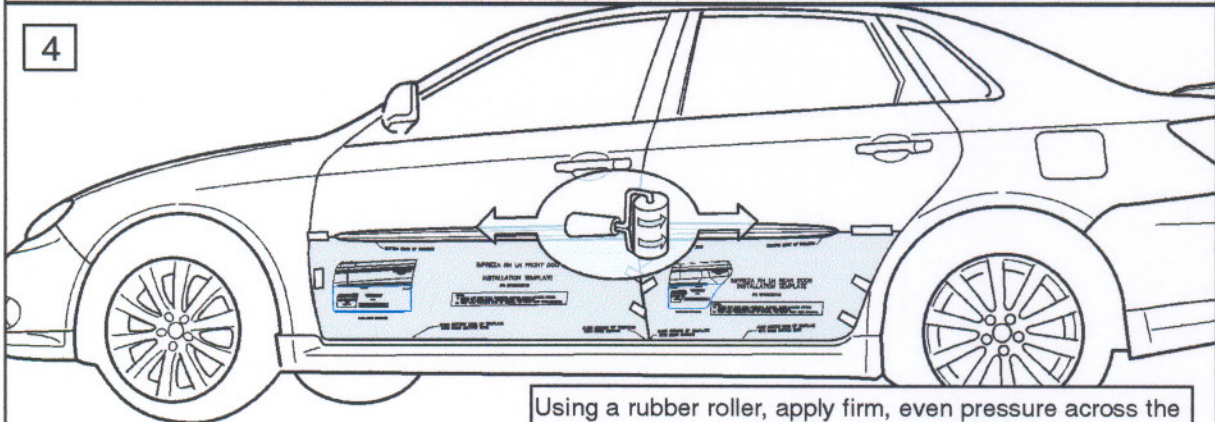
Tape front and rear door body side molding, location templates into place as shown.

3



Remove liners from backside of Body Side Molding and place into location as shown.

4



Using a rubber roller, apply firm, even pressure across the Body Side Molding to adhere to vehicle.

Repeat steps #1 thru #4 for the passenger side.

Part number
J101SFG000XX

Date
04-06-07

Subaru of America

Page
2/2