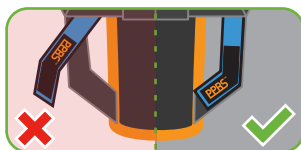
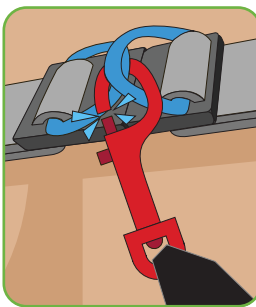
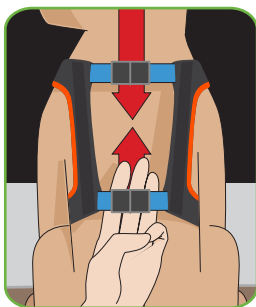
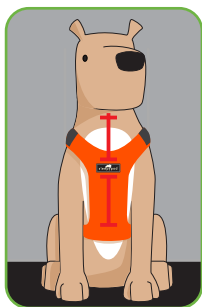


# Clickit Sport

Car Harness Restraint

Watch the instructional video at [YouTube.com/Sleepypod](https://www.youtube.com/Sleepypod)

## HOW TO CLICKIT ON YOUR DOG



Attach hook and loop tab to the strap.

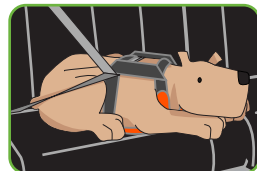
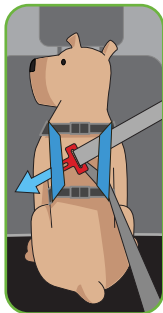
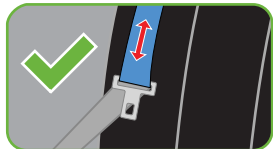
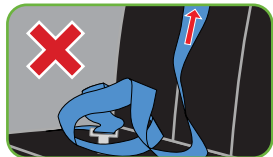


Take time to acclimate your pet to its new harness before a trip.

Place Sleepypod logo in the center of your dog's chest. Straps should fit tight with three fingers laid flat under the buckles while your dog is standing up. Straps may appear loose while dog is lying down.

To use as a walking harness, clip both metal rings (at the neck) onto your dog's leash.

## HOW TO CLICKIT IN THE REAR SEAT



Your dog should be able to sit up and lie down comfortably.



Buckle Shield



S-Clip

(optional accessories)

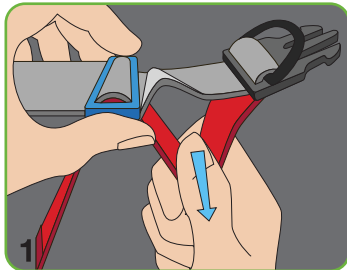
To connect Clickit Sport to your vehicle, insert seat belt through both loops located on the back of the harness and then buckle into the car's seat belt buckle. Avoid locking the seat belt.

**Pets should ride in the back seat.**  
**Never leave a pet unattended.**

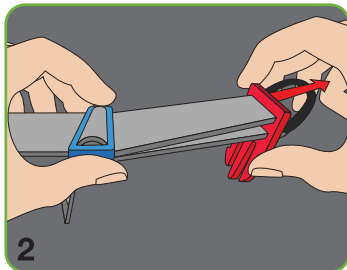


# HOW TO ADJUST CLICKIT SPORT HARNESS

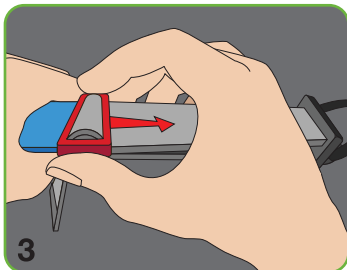
## LOOSENING



1 Hold metal slide and pull bottom strap.

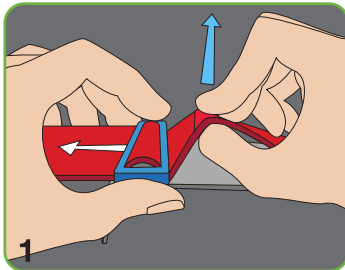


2 Hold metal slide and pull plastic buckle.

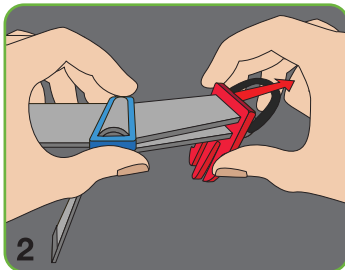


3 Pull metal slide toward buckle.

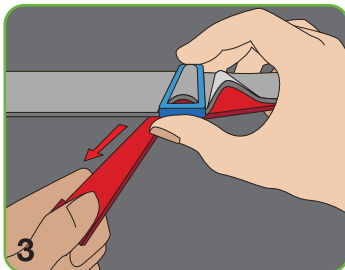
## TIGHTENING



1 Pull top strap and move metal slide toward vest.

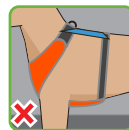
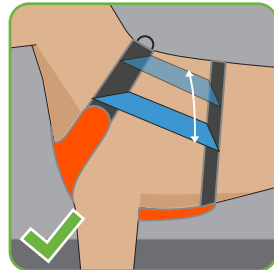


2 Hold metal slide and pull plastic buckle.



3 Hold metal slide and pull strap then repeat step 2.

# SIZING GUIDE



Too tight



Too loose



Patented  
contact@sleepypod.com  
Sleepypod.com

©2022

## Crash Replacement Warranty

This product is covered through Sleepypod's Crash Replacement Program when used in accordance with manufacturer recommendations and for as long as the original purchaser owns the product. It is eligible for replacement in full or part if damaged in an auto accident. View program details at [Sleepypod.com/crash-replacement-program](https://Sleepypod.com/crash-replacement-program)